

# Discover a New Way of Seeing Color!

## Provo, UT 4-Day Plein-Air Workshop 2021

**Dates:** Monday – Thursday, October 4-7  
**Times:** \*9:00 am – 12 noon and 1:30 – 4:30 pm  
**Fee:** \$560 (includes Thursday's model fees)

**Location:** Private residence (TBA after registration), Provo, UT 84604  
 (and surrounding areas)

\*We will assemble at 8:00 am on the first day of class — demo begins at 9:00!



Good color, or color that expresses the *light key* of nature, can make even the most mundane subject matter strikingly beautiful. “Anything under the sun is beautiful if you have the vision—it is the seeing of the thing that makes it so,” from *Hawthorne on Painting*. I see a remarkable change in my students’ work after only one day of painting. They begin to see color in the shadows. Many students say they have discovered a world of color that has changed them forever — their vision has been altered.

### Supply List:

- sturdy, portable, plein-air easel or pochade setup (able to support your mixing surface—please, no paper palettes)
- painting knives (one as shown)
- a few brushes (optional)
- paper towels (*Viva*® recommended)
- sun hat or visor, & sunscreen lotion
- light blue, easily erasable, *pastel* pencil (*CarbOthello* #430) for quick, compositional sketching
- small pocket mirror
- *white* gessoed panels preferred (*Ampersand* brand *Gessobords*™ highly recommended), or canvas panels for color studies — at least twelve 12 x 16,” 11 x 14,” or 9 x 12;” for small studies — a few 8 x 10”
- wet painting carriers (for above)
- an open mind
- palette cups (minerals spirits will be provided for students who are flying to the workshop)

### Minimum basic palette of oil colors:

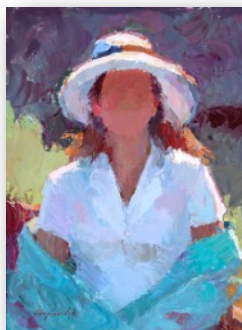
- (*Winsor & Newton*™ recommended)
- Titanium White (*large* tube)
  - Permanent Alizarin Crimson
  - Cadmium Red Light or Winsor Red
  - Cadmium Yellow
  - Cadmium Lemon
  - Cerulean Blue, Manganese Hue, or Sevres Blue (by *Rembrandt*™)  
— pick one of these greenish blues
  - French Ultramarine Blue

### Colors you can add later:

Perm Rose, Perm Madder Deep (*Rembrandt*), Cad Red Deep, Cad Orange, Mars Red or Violet, Burnt Sienna, Indian Yellow, Yellow Ochre Pale, Cad Green Pale, Perm Green Light, Winsor Emerald, Oxide of Chromium, Viridian, Mauve Blue Shade, Perm Mauve, and Perm Magenta.

## WORKSHOP DESCRIPTION

We’ll start out the first day doing still life study out of doors which will prepare us to tackle the landscape. Next two days we’ll be on location painting the landscape. I’ll be teaching the structure of the landscape—what is important to include as well as what to leave out. On the last day we’ll do outdoor color studies of the figure (in the Hensche/Hawthorne “mudhead” tradition). We’ll focus on the development of strong starts,



and expressing the big masses, light key and aerial perspective with color.

I’ll be doing demos throughout the workshop. Each day you’ll do a color study before lunch, followed by one or two color studies in the afternoon. You are encouraged to bring original artwork or photos and talk to me about your vision as an artist. I will give you some questions to ponder during the week. I look forward to working with each of you!

For more info, please visit my web site: [www.przewodek.com](http://www.przewodek.com)

### Suggested Reading

- *Hawthorne on Painting* - Collected by Mrs. Charles W. Hawthorne
- *Hensche on Painting: A Student's Notebook* by John W. Robichaux
- *The Art of Seeing and Painting* by Henry Hensche
- *The Art Spirit* by Robert Henri
- *Carlson's Guide to Landscape Painting* by John F. Carlson

To reserve your space, please contact and send a deposit of \$200 to:  
 Camille Przewodek at 522 East D Street, Petaluma CA 94952-3212  
 (707) 762-4125, [fineart@sonic.net](mailto:fineart@sonic.net)

