

CAMILLE PRZEWODEK PAINTING WORKSHOPS

Discover a New Way of Seeing Color!

Petaluma, California 5-Day Plein-Air Workshop

Dates: Monday–Friday, August 9-13, 2021 *“Color Boot Camp”*
Times: 9 am – 12 noon and 1:30 – 4:30 pm (*8 am start on Monday*)
Fee: \$675 (*includes model fees*)

Location: My studio (250 Water Street, Petaluma CA), along the west side of the river in historic, downtown Petaluma — and surrounding areas of beautiful Sonoma County.

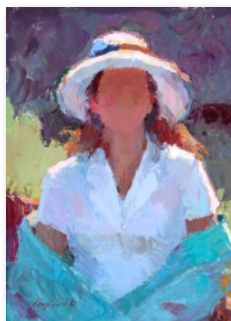
We will assemble in the studio at 8:00 am on the first day of class.

Good color, or color that expresses the *light key* of nature, can make even the most mundane subject matter strikingly beautiful. *“Anything under the sun is beautiful if you have the vision—it is the seeing of the thing that makes it so,”* from *Hawthorne on Painting*. I see a remarkable change in my students’ work after only one day of painting. They begin to see color in the shadows. Many students say they have discovered a world of color that has changed them forever — their vision has been altered.

WORKSHOP DESCRIPTION

We will start out the first two days doing still life study out of doors which will prepare us to tackle the landscape. Next two days we will be on location painting the landscape. I will be teaching the structure of the landscape—what is important to include as well as what to leave out. On the last day we will do color studies of the figure (in the Hensche/Hawthorne “mudhead” tradition). We will concentrate on

the development of strong starts, and focus on expressing the big masses, light key and aerial perspective with color. I will be doing demos throughout the workshop. Each day you will do a color study before lunch, followed by one or two color studies in the afternoon. You are encouraged to either bring original artwork or photos and talk to me about your vision as an artist. I will give you some questions to ponder during the week. I look forward to working with each of you!



Supply List:

- sturdy, portable, plein-air easel or pochade setup (able to support your mixing surface—*please, no paper palettes*)
- painting knives (one as shown)
- a few brushes (optional)
- paper towels (*Viva*® recommended)
- sun hat or visor, umbrella (optional), and sunscreen lotion
- light blue, easily erasable, *pastel* pencil (*CarbOthello* #430) for quick, compositional sketching
- small pocket mirror
- *white* gessoed panels preferred (*Ampersand* brand *Gessobords*™ highly recommended), or canvas panels for color studies — at least fifteen 12 x 16,” 11 x 14,” or 9 x 12;” for small studies — a few 8 x 10”
- wet painting carriers (for above)
- an open mind
- palette cups (minerals spirits will be provided by the studio)

Minimum basic palette of oil colors:

- (*Winsor & Newton*™ recommended)
- Titanium White (*large* tube)
 - Perm Alizarin Crimson or Perm Madder Deep (by *Rembrandt*™)
 - Cadmium Red Light or Winsor Red
 - Cadmium Yellow
 - Cadmium Lemon
 - Cerulean Blue, Manganese Hue, or Sevres Blue (by *Rembrandt*™) — *pick one of these greenish blues*
 - French Ultramarine Blue

Colors you can add later:

Perm Rose, Cad Red Deep, Light Red (by *Blockx*™), Raw Sienna, Cad Scarlet, Cad Orange, Cad Yellow Pale, Caput Mortuum Violet (*Rembrandt*™), Burnt Sienna, Indian Yellow, Yellow Ochre Pale, Cad Green Pale, Perm Green Light, Chromium Oxide Green, Winsor Emerald, Viridian, Mauve Blue Shade, Perm Mauve, Cobalt Blue, Perm Magenta, Phthalo Blue Red Shade (*Rembrandt*™).

For more info, please visit my web site: www.przewodek.com

Suggested Reading

- *Hawthorne on Painting* – Collected by Mrs. Charles W. Hawthorne
- *Hensche on Painting: A Student's Notebook* by John W. Robichaux
- *The Art of Seeing and Painting* by Henry Hensche
- *The Art Spirit* by Robert Henri
- *Carlson's Guide to Landscape Painting* by John F. Carlson

To reserve your space, please contact and send a deposit of \$200 to: Camille Przewodek at 522 East D Street, Petaluma CA 94952-3212 (707) 762-4125, fineart@sonic.net